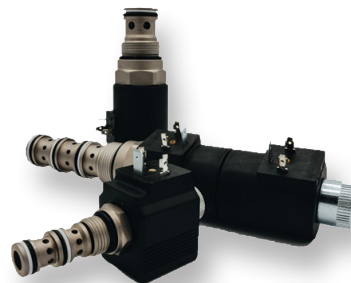




PRODUCT OVERVIEW

SLANZI
CREATIVE HYDRAULIC SOLUTIONS

ON-OFF SOLENOID VALVES



2/2

CAVITY	PRESSURE	FLOW RATE	HYDRAULIC SCHEME (EXAMPLE)
M16 M18 M22 M33 SAE08 SAE10	Up to 350 bar	Up to 80 L/min	

3/2

CAVITY	PRESSURE	FLOW RATE	HYDRAULIC SCHEME (EXAMPLE)
M16 M18 M22 M33 SAE08 SAE10	Up to 250 bar	Up to 60 L/min	

4/3 - 4/2

CAVITY	PRESSURE	FLOW RATE	HYDRAULIC SCHEME (EXAMPLE)
M22 M33 SAE08 SAE10	Up to 250 bar	Up to 60 L/min	

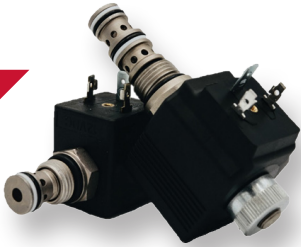
DIVERTER VALVES



6 WAY - 8 WAY

PORTS	PRESSURE	FLOW RATE	HYDRAULIC SCHEME (EXAMPLE)
3/8 - 1/2	250 bar	50 L/min	

ELECTRO PROPORTIONAL SOLENOID VALVES



▲ PRESSURE / FLOW CONTROL VALVES

CAVITY	PRESSURE	FLOW RATE	HYDRAULIC SCHEME (EXAMPLE)
SAE08 SAE10	Up to 350 bar	Up to 100 L/min	



HYDRAULIC CARTRIDGE VALVES

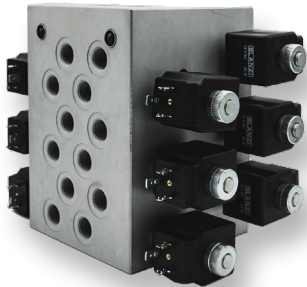
▲ PRESSURE / FLOW/DIRECTIONAL CONTROL VALVES

CAVITY	PRESSURE	FLOW RATE	HYDRAULIC SCHEME (EXAMPLE)
SAE08 SAE10 M22 M26	Up to 350 bar	Up to 120 L/min	

HYDRAULIC INTEGRATED CIRCUIT

▲ COSTUMIZED HYDRAULIC MANIFOLDS - ALLUMINIUM - CAST IRON

Up to 350 bar
Up to 150 L/min



BRAKES VALVES

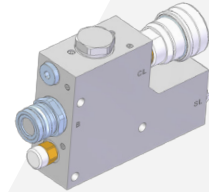
AUXILIARY BRAKE VALVES AND COMPONENTS

BRAKE VALVE FOR SINGLE LINE TRAILER

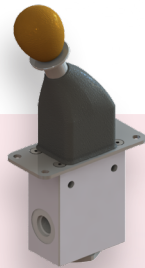


"SLV" - SINGLE LINE/ DUAL LINE ADAPTOR

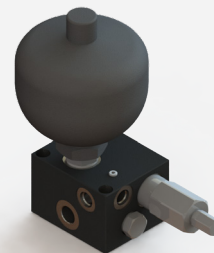
Italian type approval CUNA NC-344-20



"RL" REVERSE LEVER BRAKE VALVE

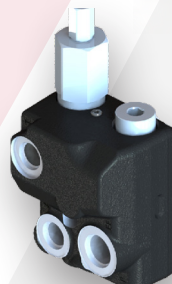
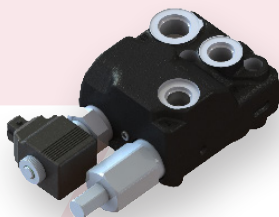


"HF" BOOSTER HIGH FLOW VALVE FOR TRAILER BRAKE VALVE



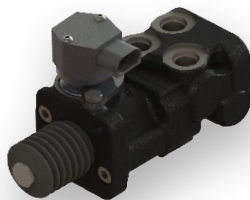
"ACV" - ACCUMULATOR CHARGING VALVES

OPEN CENTER / LS



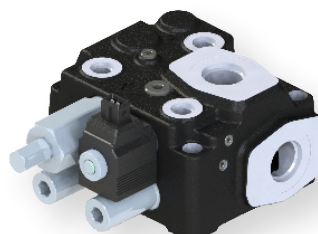
"PB" - POWER BRAKE VALVES

HORIZONTAL / VERTICAL / PUSH ROD



"MP" - PRIORITY VALVES

3 PRIORITY LEVELS UP TO 200L/min

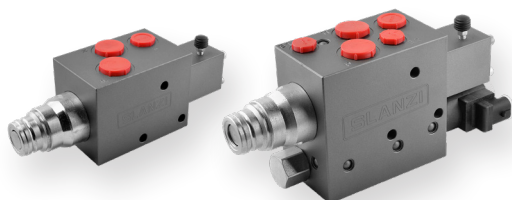


TRAILER BRAKE VALVES

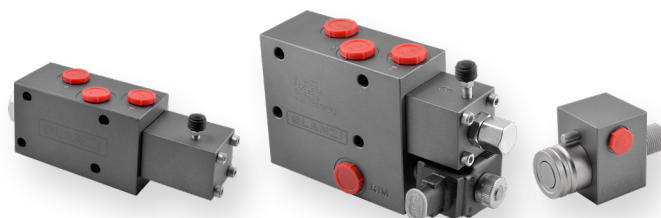
“VFR” - SINGLE LINE VALVES

According to France standard braking system and to CUNA single line standards

COMPACT SOLUTION



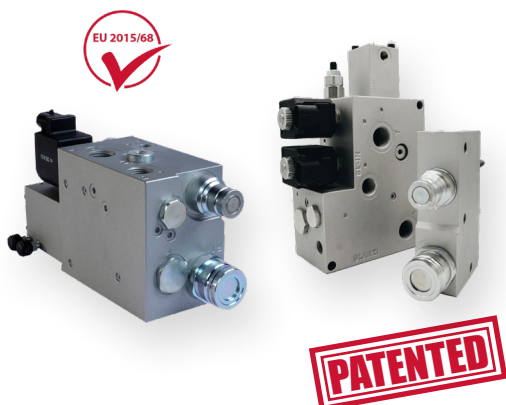
REMOTED COUPLING



“TBV” - DUAL LINE SWITCHING “INTELLIGENT VALVE” EU 2016/68

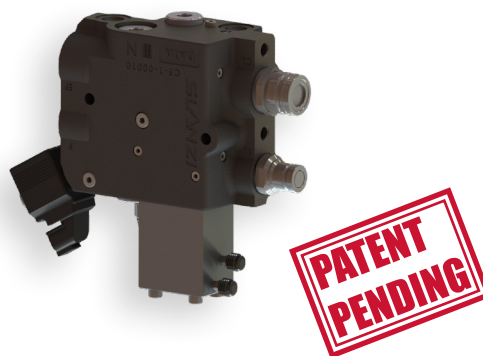
“S4”-“S5” TYPE

EU 2015/68 TYPE APPROVAL
FRANCE SINGLE LINE



“41” TYPE

EU 2015/68 TYPE APPROVAL
FRANCE SINGLE LINE CASTING BODY



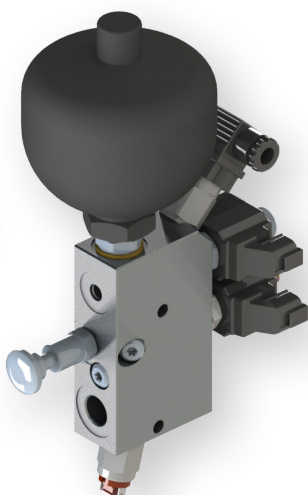
“BVA” - DUAL LINE BRAKE SYSTEM FOR TRAILER

ELECTRO-HYDRAULIC SYSTEM

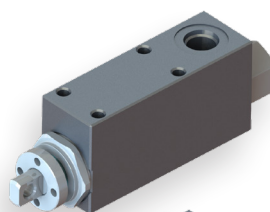
ELECTRO-
HYDRAULIC
COUPLERS



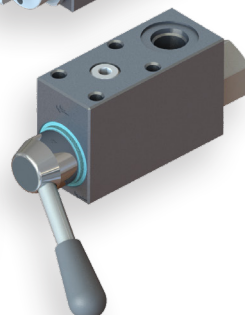
HYDRAULIC
MANIFOLD



AUTOMATIC PRESSURE
ADJUSTER



MANUAL PRESSURE
ADJUSTER





ABOUT US

Our company was founded in 1996 in Novellara (Reggio Emilia), at the heart of an area with a long-established passion for the sector and knowledge of the production of precision mechanics and hydraulic components.

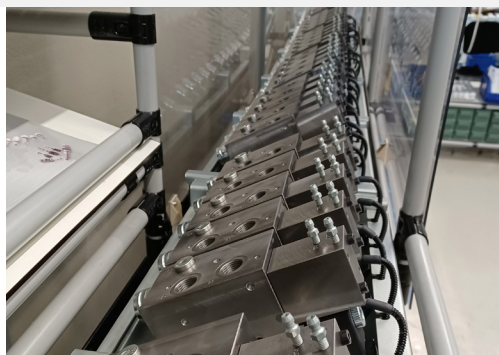
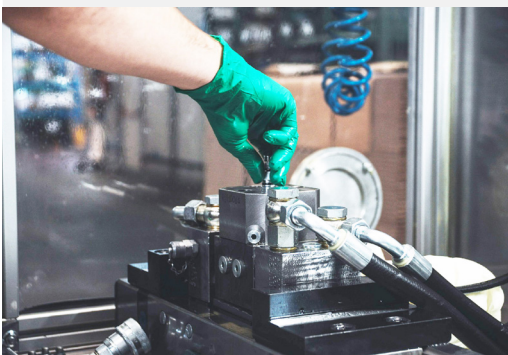
We took our first steps in the production of custom manifolds, hydraulic components and trailer braking valves and systems for agricultural tractors.

Over the years, we have always endeavoured to broaden our range of products, earning renown and appreciation for the design and production of electrical, electro-proportional and mechanical valves and cartridges, flow diverter valves, tractor and trailer braking valves and systems and integrated hydraulic systems.

We continue to believe strongly in the values that have always guided us throughout our history and development: a passion for our land and our work, which has allowed us to earn a leading position in the hydraulic sector.

Those who work and collaborate with us appreciate the importance we place on people and on sharing professional goals.

All these elements are essential to the Slanzi Oleodinamica philosophy.



SLANZI
CREATIVE HYDRAULIC SOLUTIONS

SLANZI OLEODINAMICA s.r.l.

Via Provinciale Nord, 221 - 42017 NOVELLARA (RE)

Tel. 0522/651313 - 651298 - Fax 0522-756001 - E-mail: info@slanzi.it

www.slanzi.it