

### DESCRIZIONE / DESCRIPTION

Valvola di massima pressione a cartuccia ad azionamento diretto, blocca il flusso d'olio dalla bocca P verso la porta T fino a che la pressione raggiunge il valore di taratura impostata.  
Direct-acting, relief cartridge valve intended for use as a pressure limiting device for common hydraulic circuit protection. Blocks flow from P to T until the presetted pressure value is reached.

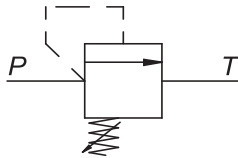
### TIPO / TYPE

**VMX**

### GRANDEZZA / SIZE

**M20**

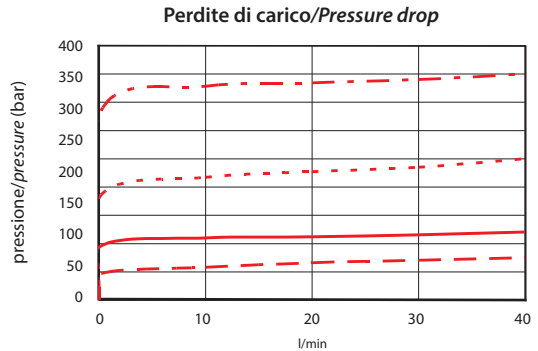
### SIMBOLO / SYMBOL



### PRESTAZIONI / PERFORMANCE

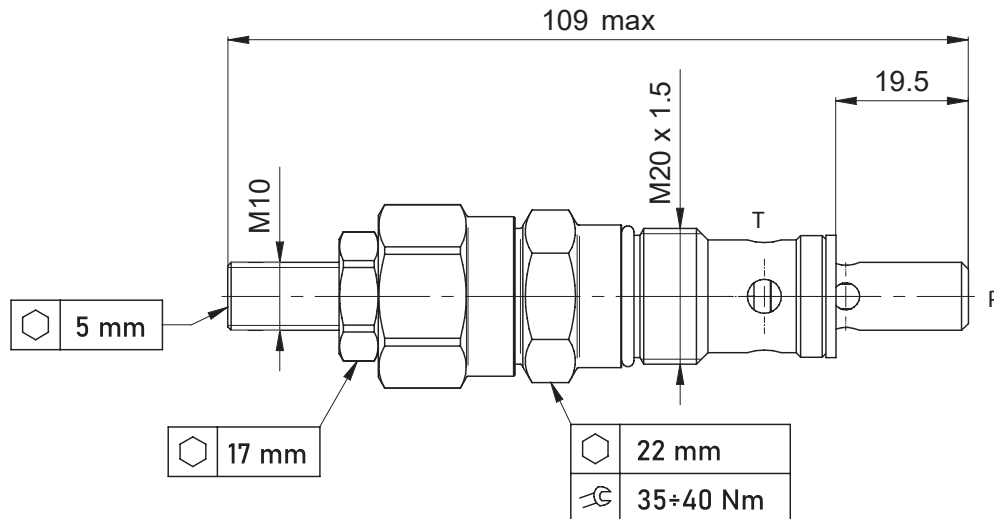
### SPECIFICHE / SPECIFICATION

Cavità Cavity	C 2015
Pressione max. Max. Op. pressure	350 bar
Portata max. Max Flow	40 l/min



Olio idraulico minerale 32 cSt – temp. 55 °C [104 °F]  
Hydraulic mineral Oil 32 cSt – temp. 55 °C [131 °F]

### DIMENSIONI / DIMENSIONS



### INFORMAZIONI PER L'ORDINE / ORDERING INFORMATION

TIPO / TYPE	VMX	M20	-	-	-	REGOLAZIONI / ADJUSTMENTS:
MODELLO / MODEL						<ul style="list-style-type: none"> <li>• 1 = Vite / Hex. Socket screw</li> <li>• 2 = Volantino / Handknob</li> <li>• 3 = Piombatura / Anti-tamper cap</li> </ul>
GUARNIZIONI / SEALSS:						CAMPO DI TARATURA / SETTING RANGE:
<ul style="list-style-type: none"> <li>• Omettere se NBR / Omit if NBR</li> <li>• V = FKM</li> </ul>						<ul style="list-style-type: none"> <li>• A = 5-50 (bar)</li> <li>• B = 30-100 (bar)</li> <li>• C = 50-220 (bar)</li> <li>• D = 80-350 (bar)</li> </ul>

