

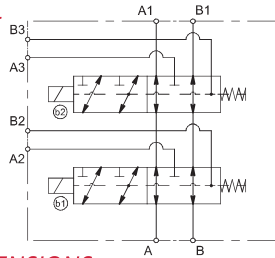
DESCRIZIONE / DESCRIPTION

Deviatore di flusso 8 vie ad azionamento elettrico, montaggio in linea
8 way flow diverter valve electrically operated, in line mounting

TIPO / TYPE

FD-8V

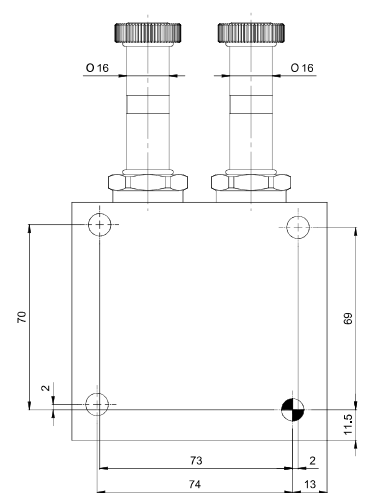
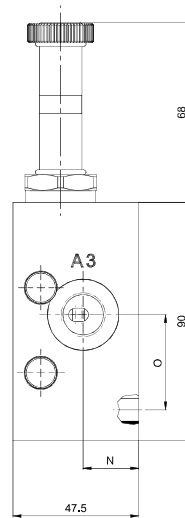
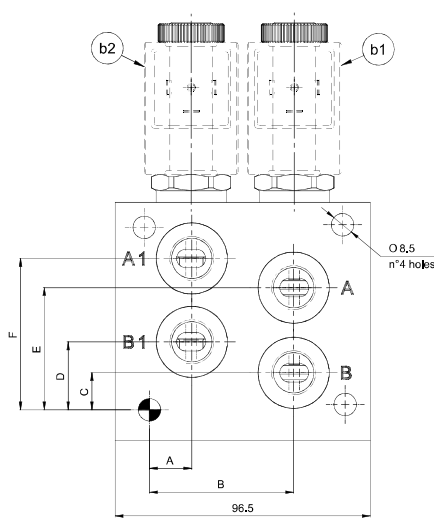
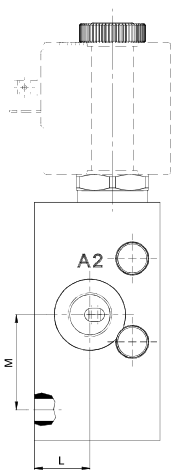
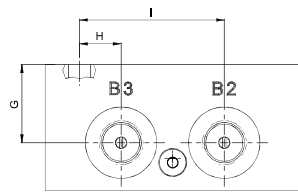
SIMBOLO / SYMBOL



SPECIFICHE / SPECIFICATION

Pressione max. Max. Op. pressure	250 bar
Portata max. Max Flow	50 l/min
Bobine Coils	Cap. 6 - (size 10)

DIMENSIONI / DIMENSIONS



INFORMAZIONI PER L'ORDINE / ORDERING INFORMATION

TIPO / TYPE FD-8V - MODELLO / MODEL

- 3/8 = Attacchi/Ports 3/8 G
- 1/2 = Attacchi/Ports 1/2 G